

Community Short Breaks Service: Family Activities February—April 2023



SEAHAM FUNSHACK

All ages

Tuesday 21st February

6pm—8pm

1, Hall Dene Way, Seaham Grange Industrial Estate,
Seaham SR7 0PU

Includes food for children/young people

Cost £6 per child

Requests by Friday 10th Feb

Payment due by Friday 17th Feb

PAYMENT DEADLINES

Why do we have payment deadlines?

We often have to pay all or most of the costs for events up front and sometimes months in advance.

If we don't get payment from families by the deadline we run the risk of having empty places we have paid for.

We are being very strict with deadlines to make sure as many families as possible get to the activities they want.



DURHAM CLIMBING CENTRE

Wednesday 22nd February 1.30p.m.—3p.m.

St. John's Road

Meadowfield Industrial Estate

County Durham, DH7 8TZ

Cost £5 per person climbing

Request places by Friday 10th Feb

Payment due by Friday 17th Feb



AMF Bowling

Friday 24th Feb February

1pm

Washington

NE38 7RZ

Cost: £6 per parent/carer

£5 per child/young person

Includes 1 full game and food for each person

Request places by Friday 10th Feb

Payment due by Friday 17th Feb



Magna Science Adventure Centre is a hands-on experience, packed with interactive exhibits and fascinating displays. Explore the wonders of Science and Technology in four pavilions – Air, Earth, Fire and Water.

We have been able to kept the prices the same as 2020

Thursday 23rd February

Bus leaves from Sainsbury's Gilesgate, Durham

at 8a.m. prompt

Cost £12 per adult

£10 per child/ young person

Request places by Friday 10th Feb

Payment due by Friday 17th Feb





Mothers Day / Special

Person Pottery

Painting

Sunday 26th February

11am or 1pm session

Rosebud Ceramics

UNIT 1D

Chipchase Court, Seaham Grange, SR7 0PP

Please note—there will be a choice of 3 items to choose from to paint. No other choices will be available during these sessions.

When you request places tell us the total number of places requested for painters and state either:

11a.m. session

1p.m. session

Or

Either session

Cost £6 per painter

Request places by Friday 10th Feb

Payment due by Friday 17th Feb

Annual General Meeting

AGM

Saturday 18th March 1pm –2pm

**Vane Tempest Hall, Maynard's Row, Gilesgate,
Durham, DH1 1QF**

Everyone welcome.

Followed by Family Pie, Peas and Beetle Drive

Beetle **Drive**

2pm – 4pm

**Vane Tempest Hall , Maynard's Row, Gilesgate , Durham, DH1
1QF**

Cost: £2 per person (includes pie and peas)

PLEASE LET US KNOW OF ANY DIETARY REQUIREMENTS.

Request places by Friday 3rd March

Payment due by Friday 10th March



Tuesday 4th April

10:30 am

Holmside Park Arena

Edmondsley

Chester le Street DH7 6EY

Cost: Children aged 1-3 £3.50

Children aged 4+ and adults going on £7

Guardian (not going on) £3.50

Under 1's Free

65's and over Free

Please let us know ages of all children

Request places by Friday 17th March

Payment due by Friday 24th March



Saturday 15th April

Doors open 5:30pm– 8pm

Riverside Industrial Estate

Langley Park

Durham

DH7 9TT

Cost £7 per person

Request places by Friday 31st March

Payment due by Friday 7th April

**Everyone coming along must pay as we are charged
for everyone coming through the door.**



Quads4ALL

Wednesday 12th April

Groups of 8 start from 10a.m.

(time slots to be confirmed)

Min Age 6 years

Nr. Greatham, Hartlepool, TS22 5PG

Cost £10 per driver

Request places by Friday 24th March

Payment due by Friday 31st March



Sunday 26th April

10:30am

Lanchester, DH7 0TA

Cost £4 per Person

Under 2's free

Request places by Friday 7th April

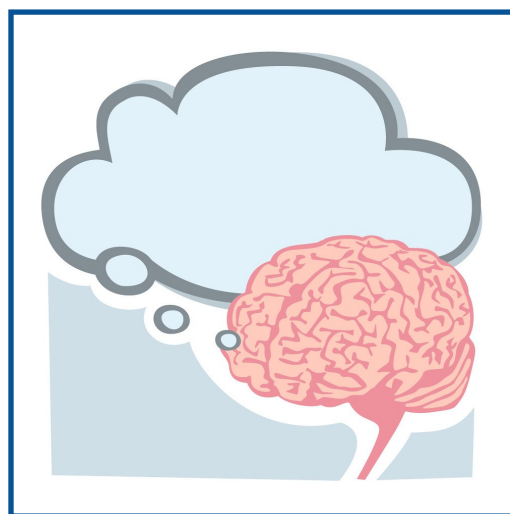
Payment due by Friday 14th April

We told you a few months ago about some changes to our offer and providing more activities nearer your local area.

Thank you to everyone who has been sending us their ideas and comments about what they would like and where.

Keep an eye out for our flyers coming out soon with new activities and venues.

Tell us what you think.



Important

Information needed when requesting places

Child's name

Age

Disability Type

Village / Town

Activity Name

Total number of adult/carer places requested

Total number of children/young people/siblings places.

Confirmation email will be sent if you are allocated places .

ADDITIONAL INFORMATION

- ◆ **We do not operate on a first come, first served basis. If you want more information about why please get in touch.**
- ◆ **This means you do not hear immediately whether or not you have places.**
- ◆ **Sometimes we have to keep a waiting list. If you are no longer able to attend an activity please tell us as soon as possible. This is so we can try to fill the places and avoid you having to pay.**
- ◆ **You must only request places for your own family. If you know another family who would benefit please ask them to get in touch with us directly.**

Request places by email or phone and we will contact you to let you know if we can allocate you places.

We do not operate on a first come, first served basis. Contact us if you would like to know why.

FIND US ON



Www.dadlg.org



Durham dadlg



@dadlgdurham

Contact Us



DADLG

Vane Tempest Hall
Maynard's Row
Gilesgate
Durham
DH1 1QF



07592 366454



**dadlg08@googlemail.
com**